



MONTHLY MEMBERSHIP PROGRESS REPORT

District 22 B

Results as of: 09/30/2018

GMT: MAHESH CHITNIS

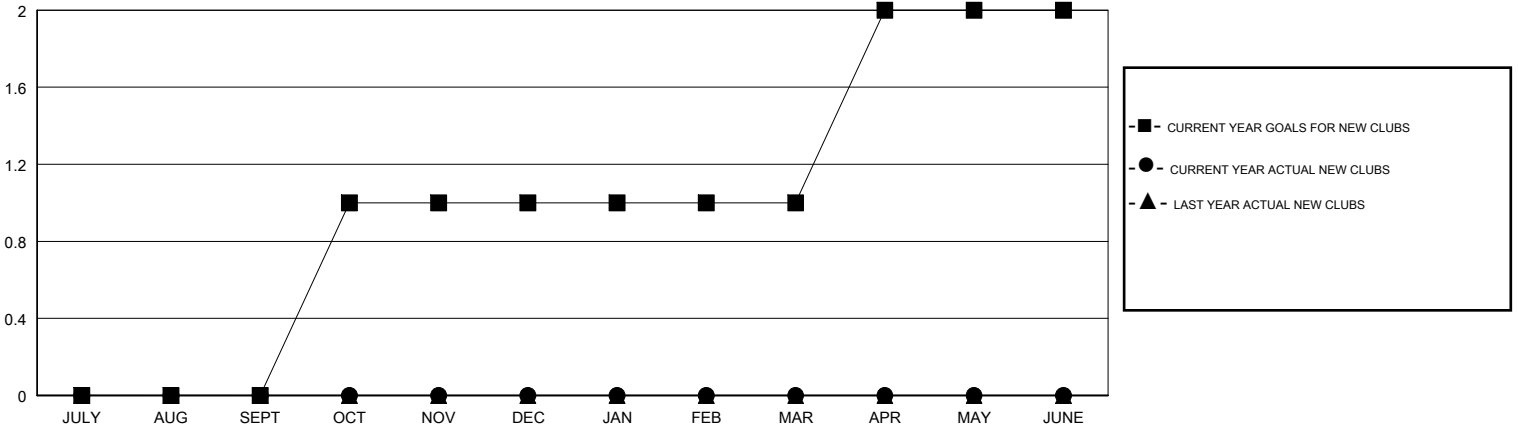
LOCATION MARYLAND

GMT CA

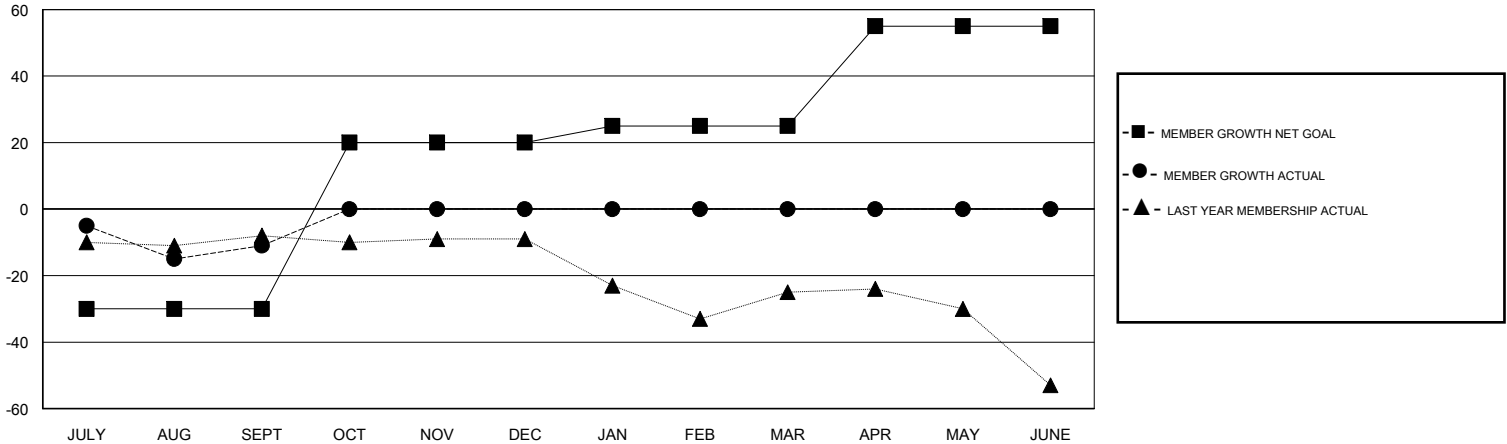
Clubs			
RESULTS FOR 2018-2019			
QUARTER	NEW CLUB GOAL	NEW CLUBS	DROPPED CLUBS
JULY/AUG/SEPT	0	0	0
OCT/NOV/DEC	1	0	0
JAN/FEB/MAR	0	0	0
APR/MAY/JUNE	1	0	0

Members			
RESULTS FOR 2018-2019			
QUARTER	MEMBER GROWTH NET GOAL	MEMBER GROWTH ACTUAL	DROPPED MEMBERS ACTUAL (including transfers)
JULY/AUG/SEPT	-30	20	31
OCT/NOV/DEC	50	0	0
JAN/FEB/MAR	5	0	0
APR/MAY/JUNE	30	0	0

GOALS AND ACTUAL NEW CLUBS CUMULATIVE



GOALS AND ACTUAL MEMBERS CUMULATIVE



DROPPED CLUBS: 0

11 CLUBS OF 46 ADDED 1 OR MORE NEW MEMBERS

GENDER DISTRIBUTION	
MALE	939 (73.02%)
FEMALE	347 (26.98%)
Women Percentage Fiscal Year Goal: 25%	

DROPPED MEMBERS	
DECEASED	7
CLUB CANCELLED	0
OTHER	24
TOTAL	31

[CLICK HERE FOR CUMULATIVE MEMBERSHIP DATA](#)

TOTAL FAMILY UNIT MEMBERS	148
FAMILY MEMBERS PAYING HALF DUES	74